

# Marine Corps Air Station Iwakuni

## Garbage Separation Guidance for Main Base Residents



- 1 Combustibles
- 2 Recyclables
- 3 Non-combustibles

# Separation Rules

- ▶ All trash must be separated by category and placed in clear trash bags; colored bags are not authorized.
- ▶ Recyclables should be rinsed.
- ▶ Bulky items will be placed at locations designated by housing managers.  
(Bulky items are any item that cannot fit into the trash container)
- ▶ All bags must be placed in the trash containers provided and within the designated trash enclosure or designated pickup location. No Hazardous Material/Waste will be accepted in trash enclosure.
- ▶ No auto parts will be accepted in any trash enclosure.  
(MCCS Typhoon motors or the Auto Hobby Shop are the *only* places to conduct auto repair where auto parts and auto waste can be accepted.)
- ▶ Housing Managers will monitor compliance with this guidance.

**All government property must be turned into DRMO (DLA) for disposal.**

# Trash Container

Each housing unit will be provided two outside trash containers for combustibles, recyclables, and non-combustibles.

## **Combustible Container:**

All combustible items, Category 1, should be bagged and placed in the trash container labeled “Combustible.”

## **Non-Combustible Container:**

Categories 2 and 3 must be separated by category each within its own bag and placed in container labeled “Non-Combustible.”

**Items needing special handling and disposal requirements will be placed next to trash containers.**

**\*Report broken trash containers to your Housing Manager.**

# Combustibles

## ▶ Kitchen Garbage:

- ▶ Vegetables, fruits scraps, egg shells, bones, clams, etc.
- ▶ (★Soak liquids in newspaper.)



## ▶ Paper containers:

- ▶ Paper cartons with aluminum lining, soiled boxes, paper scraps, paper noodle cups, ice cream containers, etc.



## ▶ Garden waste:

- ▶ Leaves and plant trimmings, etc.



## ▶ Textiles:

- ▶ Soiled; underwear, bedclothes, cushions, curtains, textiles etc.



## ▶ Sanitary items:

- ▶ Sanitary napkins, disposable diapers, paper towels for pets, etc.



# Combustibles

## ► Others:

- Cigarette butts
- Ash
- Photos
- Ice packs
- Mats
- Disposal heat pads, etc.



## Note:

- Rinse off residual food and other liquids
- Desiccants containing lime must be placed with Hard-to-Dispose items

Plastics with hard-to-remove residue shall be placed with combustibles



Tubes of ketchup, mustard, toothpaste, etc.



Retort Pouch



Small bags of seasoning



Plastic wrap for food/deli (Not easily cleaned)

Home medical waste shall be included in combustibles.



CAPD bags / Stoma bags, Tubes, catheter without needle, Syringe barrel without needle



# Recyclables

Recyclables category will be separated by the Solid Waste Contractor prior to disposal at the Recycle Center.

- ▶ **Newspaper\***
  - ▶ Must not be contaminated with staples, paper clips, grease, carbon paper, plastic, tape, etc.
- ▶ **Magazines/Colored Paper\***
  - ▶ Must not be contaminated with staples, paper clips, grease, carbon paper, plastic, tape, etc.
- ▶ **Cardboard (corrugated)\***
  - ▶ Flatten, must not be contaminated with grease (stained), tape, etc. (remove foreign materials)
- ▶ **Cans (aluminum and steel)\***
  - ▶ Aluminum and steel cans, rinse well.
- ▶ **PET Bottles\***
  - ▶ All plastic bottles with the symbol ♻️. Remove cap and label and rinse well; **dispose of plastic caps and labels with Category 3.**



# Recyclables

## ► Clothing/Textiles

- **Clean** reusable clothing/textiles e.g. sheets, blankets, towels, clothing, backpacks, coats, leatherwear, shoes (tied together) and stuffed toys.



## ► Electrical Cords

- All electrical cords, must cut ends and wrap in bundles



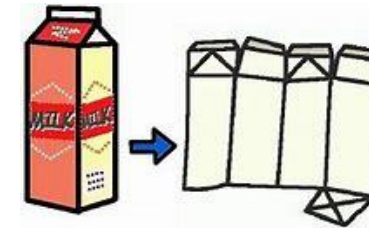
## ► Used Cooking Oil

- Put in sealed plastic bottle to prevent leaks or spills



## ► Milk Cartons

- Rinse well, cut open and flatten



\* Recyclable materials marked with asterisk can be dropped off at the 24 hour drop site located at the Recycle Center Bldg.#7725, **source separated**.

All other recyclable materials will be accepted by the Recycle Center during normal working hours Mon-Fri 0715-1530.

**Revenues generated from recyclable material help fund MCCS outdoor recreation and Pollution Prevention projects.**

# Non-Combustible

## Metal & Fragmental items

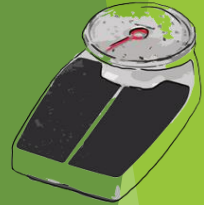
- ▶ Aluminum foil and aluminum containers must be rinsed thoroughly
- ▶ Metal cooking ware (e.g. pots, kettles, knives, cap or can openers, and others)
- ▶ Metal Items (items that fit into plastic bags) (e.g. stationary items, scales, scissors, knives, razors, cameras, tools, metal wires, nails, screws, umbrellas, hangers, etc.)
- ▶ Other items (e.g. clocks, calculators, AC adapters, CDs, floppy discs, records, paint cans, magic marker, ball point pens, etc. (take out batteries before disposal)
- ▶ Fragmental items (Plastic products without mark) (e.g. flower pots, helmet, balls, toys, tooth brush, plastic hangers, bath covers)
- ▶ Chopping board, shoes, handbags, rain coats
- ▶ Small electrical appliances e.g. lamps, pencil sharpeners, etc. (take out electrical cords with [Recyclable items])

### Note:

- Lithium batteries must be removed, terminals taped and placed separately
- Gas cartridges must be removed and placed separately



Wrap any sharp objects in paper






# Non-Combustible

## Ceramic & Glass items

- ▶ Potteries e.g. Clay pots
- ▶ Glass, mirrors (★ wrap dangerous or broken glass in newspaper)
- ▶ Agrochemical bottles (dispose caps according to the material)
- ▶ Other: pieces of blocks and concrete (limited to one bag)



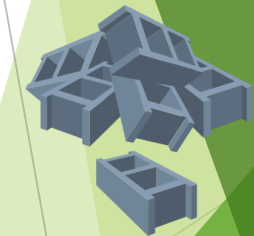
## Plastics

All goods with the symbol  such as;

- ▶ Plastic or Nylon bags, food wrappers
- ▶ Candy wrappers such as cellophane

## Styrofoam

- ▶ Food trays, packing material, etc.



# Non-Combustible

## ► Plastic containers (Non-PET containers)

- Cooking oil
- Shampoo
- Cosmetic
- Mayonnaise
- Mustard
- Toothpaste
- Pudding
- Butter
- Bean-curd
- Eye droppers

## ► Cosmetic bottles

- Lotion

## ► Glass Bottles

- Drink bottles
- Juice
- Vitamin drinks
- Liquor
- Medicine bottles



## ► Food bottles

- Jam
- Dressing
- Pepper
- Instant coffee



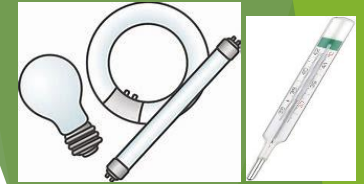
### Note:

- Remove caps, empty fluids and rinse the containers thoroughly.
- Plastics with hard-to-remove residue should be placed with combustibles.

# Non-Combustible

The following items require special handling and disposal:

- ▶ **Dry Cell Batteries, Lithium and Alkaline:**
  - ▶ Terminals must be taped and collected in separate bag
- ▶ **Mercury Containing Devices:**
  - ▶ Fluorescent Lamps should be protected and collected in a way to prevent accidental breakage; place in original box or sleeve. Wrap broken light bulbs, rings, and tubes.
  - ▶ Thermometers should be protected and collected in a way to prevent accidental breakage; place in original packaging if possible.
- ▶ **Gas Cartridges and Lighters:**
  - ▶ Emptied to the maximum extent possible and collected in separate bag; do not mix with other waste.
- ▶ **Empty Aerosol Cans:**
  - ▶ Collected in separate bag. Do not mix with other waste
- ▶ **House-Hold Hazardous Materials:**
  - ▶ Properly contained in leak-proof container or zip lock bag to prevent spill and collected in separate bag. Do not mix with other waste.
- ▶ **Video and Cassette:**
  - ▶ Collected in separate bag. Do not mix with other waste



Mercury Containing Devices



House-hold Hazardous Materials



Gas Cartridges / Lighters



Lime Desiccants



Empty Aerosol Cans



Video and Cassette



Lithium and Alkaline Batteries Only



## Bulky Waste

(Items that cannot fit in provided trash containers)

- ▶ Before taking out large sized items, ask yourself the following:
  - ▶ Can it be repaired?
  - ▶ Can anyone else use it?
  - ▶ Can it be taken to the Thrift Store on base or Iwakuni City Recycling Plaza?



### Note

- Government property is not authorized
- Place items at location designated by Housing
- **DO NOT PLACE BULKY ITEMS OUT ON INCLEMENT WEATHER DAYS**

# General Information

## Iwakuni City Recycling Plaza

Recycles used furniture in good condition at no cost. Consider this option before disposing of unwanted furniture.

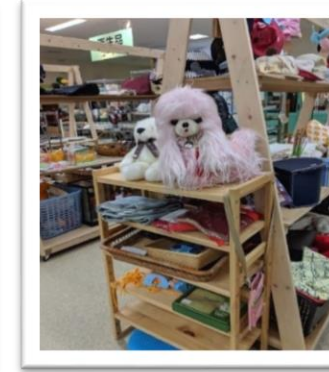
**Address:** 2 Chome-12 Hirata, Iwakuni

**Open:** Mon-Sat, 8:30 ~ 16:45

**Closed:** Sunday

**TEL:** 0827-32-5371

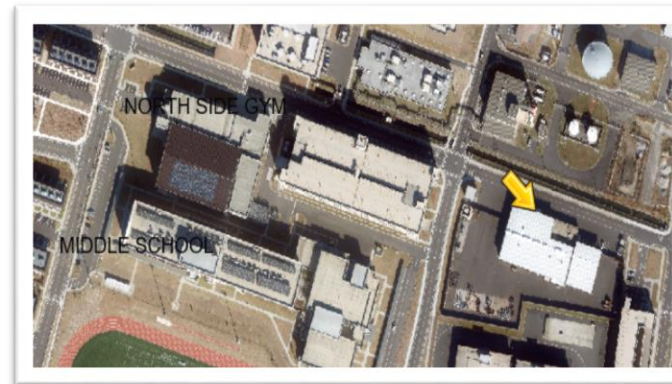
► **Donation:** Mon-Fri, 8:45 ~ 16:00



## MCASI Recycle Center 24hr drop off building 7725

Currently accepts the following materials:

- Corrugated Cardboard
- White Paper
- Colored Paper
- Newspaper
- Aluminum and Steel Cans
- Glass Bottles
- PET Bottles



\*Refer to guidance in Category 2; must be properly separated prior to disposal

**\*Trash is not authorized**



# General Information

## ▶ **Trash Collection Schedule**

(combustibles, non-combustibles, recyclables, and bulky waste)

- ▶ FH MIDRISES: Monday - Saturday
- ▶ FH 2 & 3 story units: Tuesday & Saturday
- ▶ BH Bldg. 1189 - 1193: Monday, Wednesday & Friday
- ▶ All other BH units: Monday - Saturday
- ▶ Bulky Items (all residential areas): Monday & Thursday

## ▶ **Important numbers:**

- ▶ Family Housing: 253-5541
- ▶ Bachelor Housing: 253-5803
- ▶ Solid Waste Manager: 253-3039
- ▶ Recycle Center: 253-3241